



St. Albans Avenue, London, W4 5JU

Guide Price £1,100,000

WHITMAN & CO.

SALES · LETTINGS · COMMERCIAL

- Four bedroom/two bathrooms
- 27' Through reception room
- 35' Rear garden and 40' front garden
- Sought after residential road
- Fantastic transport links
- No chain

Tenure - Freehold
Local Authority - Ealing
Council Tax - Band F

THE PROPERTY

A four-bedroom Edwardian house offering an excellent balance of living and entertaining space in this prestigious tree-lined residential road, with close proximity to numerous amenities. The house features four bedrooms, two bathrooms, a 27' through reception room, a 17' kitchen/breakfast room, a cloakroom, a 35' private rear garden, and a 40' front garden. It is situated in this highly desirable residential street on the borders of Bedford Park, with easy access to Turnham Green Tube station and the extensive range of shops, bars, and restaurants on Chiswick High Road. No chain.

St Albans Avenue, W4

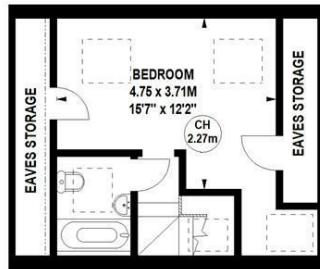
Approximate gross internal area

138.51 sq m / 1491 sq ft
(including Eaves Storage)

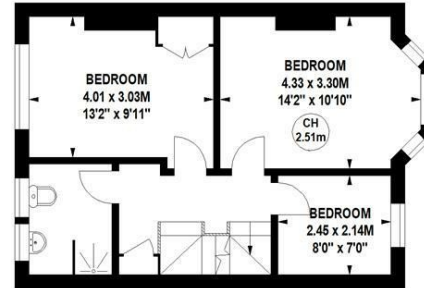
Eaves Storage

6.87 sq m / 74 sq ft

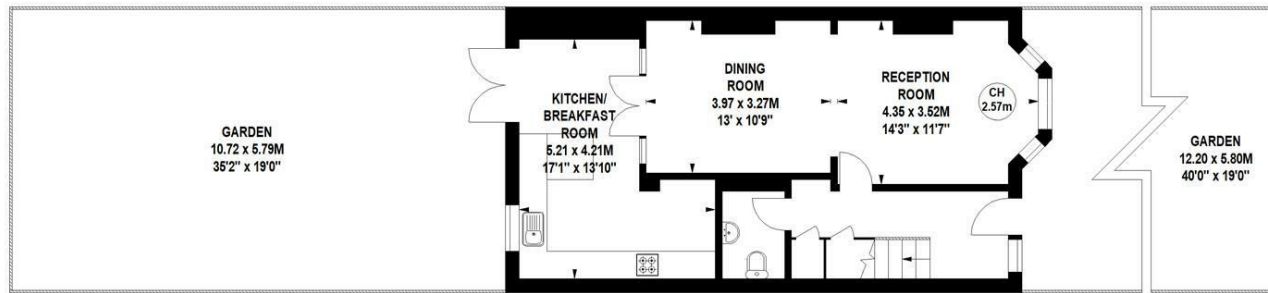
Key :
CH - Ceiling Height



Second Floor



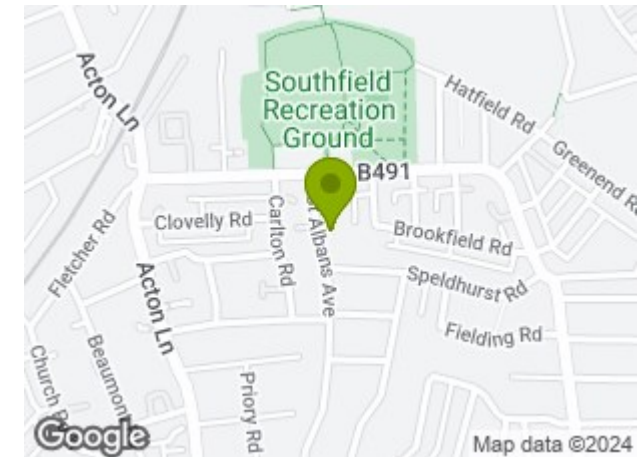
First Floor



Ground Floor

Not to scale, for guidance only and must not be relied upon as a statement of fact.
All measurements and areas are approximate only

SITUATION



5-7 Turnham Green Terrace, Chiswick, London, W4 1RG

Tel 020 8747 8800

E-mail sales@whitmanandco.com

Website www.whitmanandco.com



MISREPRESENTATION ACT 1967

Whitman & Co. for themselves and for the vendors give notice that these particulars do not constitute any part of, an offer of contract. All statements contained in these particulars are made without responsibility on the part of Whitman & Co. or the vendor. None of the statements contained in these particulars is to be relied upon as statements or representations of facts. Any intending purchaser must satisfy himself by inspection or otherwise as to the correctness of each of the statements contained in these particulars. The vendor does not make or give, and neither Whitman & Co. or any person in their employment has any authority to make or give, any representation or warranty whatever in relation to the property.